

Here is a Step by Step Process for loading Custom Tunes onto your tuner. Locate the section below for your tuner that you have.

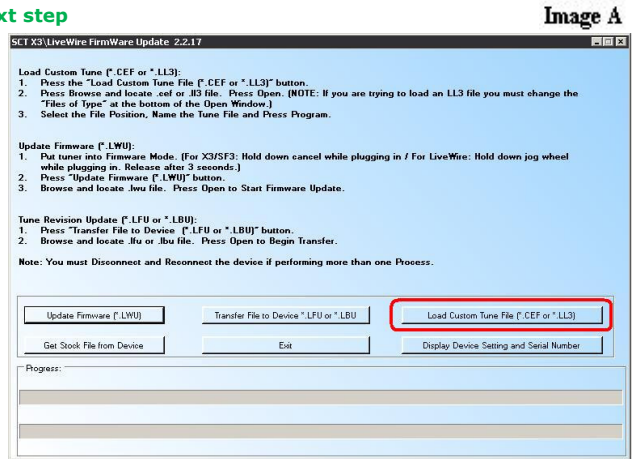
[FOR THE FORD X3/SF3 3000/3015, Livewire, GM SF3 3415 and X3 3400:](#)

Installing the Software, if already installed skip to the next step

- Make sure the device is not plugged in.
- Go to your Email, and save the tune files that were sent to you. For the location, select the desktop.

Plugging in the Device and Installing Drivers

- Once the software is installed, plug in your X3.
- A Found New Hardware Wizard will pop up, It may ask you **"Can Windows connect to Windows Update to Search for Software?"** If it does, click **"No, Not at this Time"** then press **Next**.
- At the Next Window, Select **"Install Software Automatically (Recommended)"** and click Next. Windows will search and Install the drivers for your device, Click Finish to Finish the Driver Installation
- If a **"Found New Hardware Wizard"** did not pop up, and you get an error in the next step, go back to the FAQs and locate the Entry for Installing Drivers Manually



Loading the Custom tunes onto the X3

- Now that the drivers are installed, open the **X3/Livewire Updater software**. There will be a new Icon on your desktop. (Yellow, Orange and Black.)
- Once opened, click on the button labeled: **"Load Custom Tune File"** (Image A), this will open the window for loading custom tunes onto your device.
- Click on the browse button, then browse to the location that you saved the tune files to. (*Should be the desktop*)
- Click on the first file, and **press open**
- This will bring you back to the Tune Loader Window (Image B), Select the file position, and type a Name for the tune file
- Once the file position is selected and the Tune Name is populated, press the Program button at the bottom, this will add the tune file to your tuner.
 - If you receive a message **"Wrong Serial Number, aborting"** (Image C), this means the serial number within the tune file does not match the serial number within the device. You will need to contact the dealer that created the tune for you and have them correct the serial number.
- For More than one tune file, repeat this process

Image B

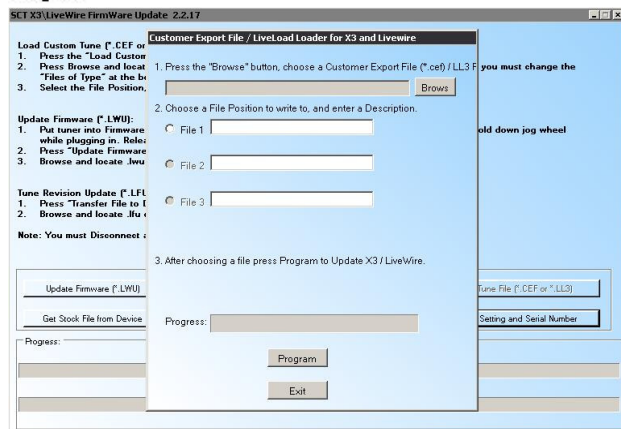
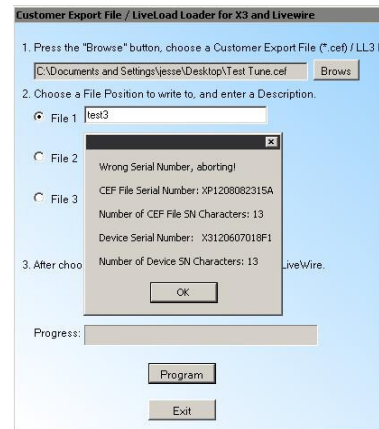


Image C



FOR THE FORD X2 9400:

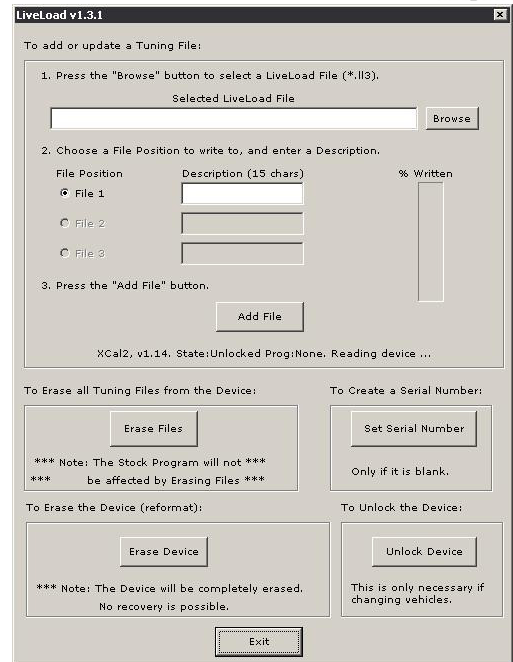
Installing the Software, if already installed skip to the next step

- Make sure the device is not plugged in.
- Go to your Email, and save the tune files that were sent to you. For the location, select the desktop.
- Go to our Tech Support page, click on Device Updates and Downloads. For drop down 1, pick the **X2 Ford - P/N 9400**, For Drop down 2, select **Device Update software**, hit **Search**. Click on "**Click Here to Download**" next to the top Program Listed: Liveload 3. Then run and install the Liveload Program.

Loading the Custom tunes onto the X2

- Now that the Liveload 3 software is Installed, let's open it up. To find it, Press Start / Then All Programs / Then look for the SCT Category / You should see Liveload in the list.
- Once Opened, Click on the "**BROWSE**" button, then browse to the location that you saved the tune files to. (*Should be the desktop*)
- Click on the first file, and press open
- This will bring you back to the Liveload Window, Select the file position, and type a Name for the tune file
- Once the file position is selected and the Tune Name is populated, press the **Add File** button, this will add the tune file to your tuner.
- For More than one tune file, repeat this process

Image D



FOR THE DCX X2 9550:

Installing the Software, if already installed skip to the next step

- Make sure the device is not plugged in.
- Go to your Email, and save the tune files that were sent to you. For the location, select the desktop.
- Go to our Tech Support page, click on Device Updates and Downloads. For drop down 1, pick the **DCX Xcalibrator 2 - P/N 9550**, For Drop down 2, select **Device Update software**, hit **Search**. Click on "**Click Here to Download**" next to the top Program Listed: DCX Liveload Program. Then run and install the Liveload Program.

Loading the Custom tunes onto the DCX2

- Now that the DCX Liveload software is Installed, let's open it up. To find it, Press Start / Then All Programs / Then look for the SCT Category / You should see DCX Liveload in the list.
- Once Opened, Click on the "**BROWSE**" button, then browse to the location that you saved the tune files to. (*Should be the desktop*)
- Click on the first file, and press open
- This will bring you back to the Liveload Window, Select the file position, and type a Name for the tune file
- Once the file position is selected and the Tune Name is populated, press the **Add File** button at the button, this will add the tune file to your tuner.
- For More than one tune file, repeat this process

Image E

